

# NEW ENGLAND SURVEY ACTIVITY

# MARINERS BRIEFING

DATE OF NOTICE: 02 JANUARY 2018

NOTICE NO. 022

## OVERVIEW

These briefings are intended to update mariners on marine operations for the Revolution Wind and South Fork Wind Farm surveys. Survey operations are planned to support both lease areas (see chart). These operations involve only the survey phase of the projects.

Mariners Briefings are submitted as needed to the U.S. Coast Guard and distributed to the fishing community and interested mariners on our website at: [dwwind.com/information-for-mariners](http://dwwind.com/information-for-mariners) or via email upon request through Rodney Avila (contact info below)

**VESSELS WILL DESIGNATE A WORKING CHANNEL ON VHF 16 DAILY AT 0600 AND 1800**

## CONTACT

**JOHN O'KEEFFE**  
MANAGER, O&M AND MARINE AFFAIRS  
Phone: 401.868.4228  
Email: [jokeeffe@dwwind.com](mailto:jokeeffe@dwwind.com)

## ABOUT THE WIND FARMS

The South Fork Wind Farm (SFWF) is a planned offshore wind farm located 30 miles east of Montauk that will consist of approximately 15 wind turbines. Revolution Wind is a 600 MW offshore wind farm serving Rhode Island and Connecticut. Both wind farms will contain an offshore substation, and a subsea transmission system able to deliver clean energy to their respective states.

- ONGOING SURVEY ACTIVITIES
- Projected End: December 2018
- For general information on the wind farms, please visit: [dwwind.com](http://dwwind.com)

**FOR FISHERIES RELATED INQUIRIES:**

**RODNEY AVILA**  
FISHERIES LIAISON  
Phone: 508.889.0401  
Email: [ravila@dwwind.com](mailto:ravila@dwwind.com)

\*Briefings will be updated as needed at [dwwind.com/information-for-mariners](http://dwwind.com/information-for-mariners)



The Orsted logo consists of a white circle containing a stylized 'O' with a vertical line through it, followed by the word "Orsted" in a bold, white, sans-serif font, all set against a blue rectangular background.

## DISCOVERY

The Discovery is used for geophysical and geotechnical surveying. Length is 230', with a 41' breadth. Registered gross tonnage of the vessel is 1991 t.

Call Sign            3EKE6  
IMO                    9152882



## CONTI

The Conti is a shallow water vessel used for geotechnical surveying. Length is 210', with a 54' breadth. Registered gross tonnage of the vessel is 1708 t.

Call Sign            WDD3645  
IMO                    9285299

\*Expected survey vessels / subject to change

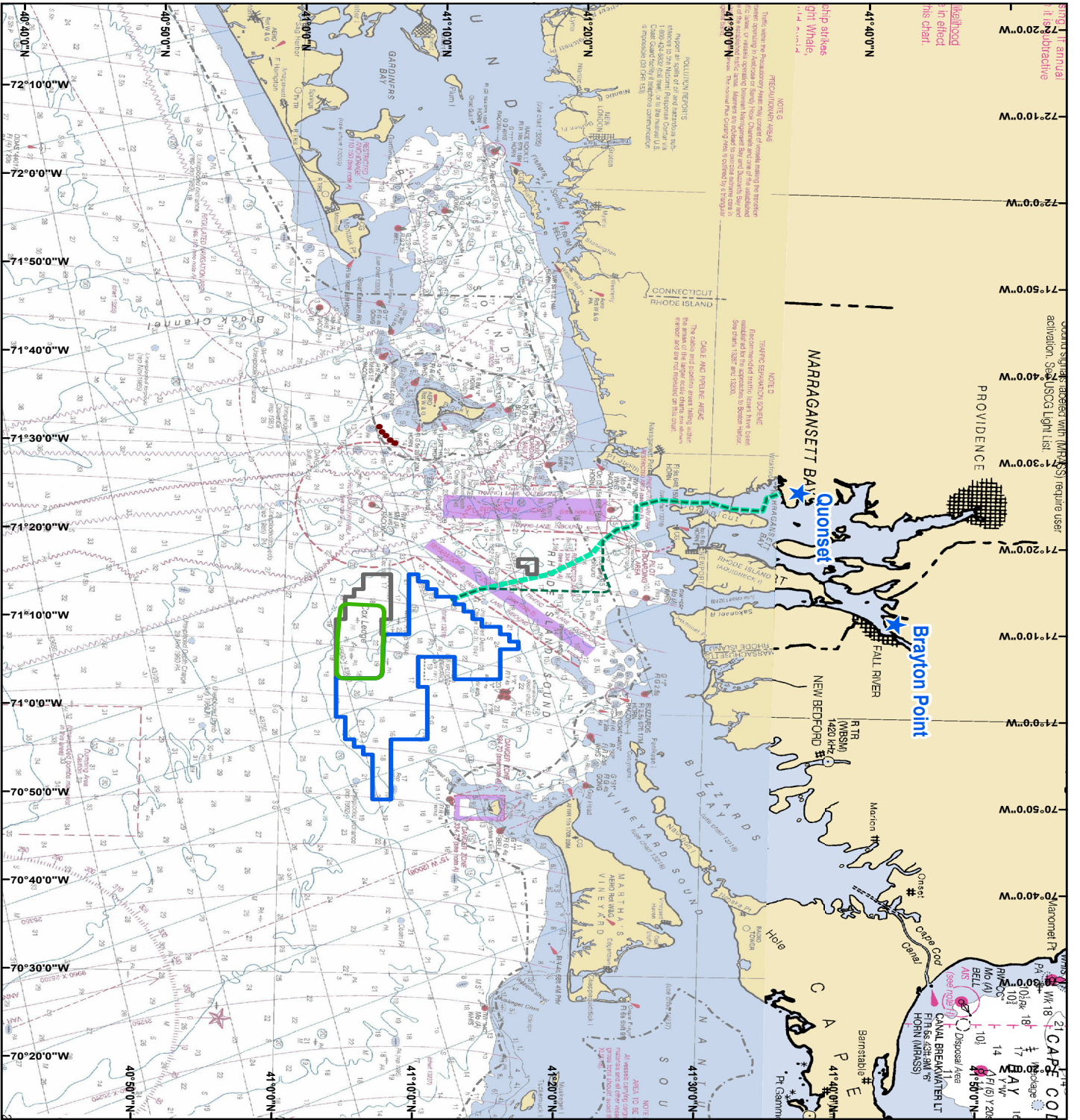


VESSEL NAME	SITE FUNCTION	PROJECT	DATE/ACTIVITY	PROJECTED OUTLOOK
Discovery	Geophysical & Geotechnical Survey Vessel	South Fork	Vessel demobilized	Vessel demobilized
Conti	Geotechnical Survey Vessel	South Fork	WX dependent / Vessel will begin geotechnical survey operations January 07	WX dependent / Vessel will begin geotechnical survey operations January 07

\*\*All Mariners transiting or fishing in the survey area are requested to give a wide berth to survey vessels as they may be limited in their ability to maneuver (VRAM) and towing gear out to 300 meters behind

the vessel. Vessels in the vicinity of the survey vessels should operate in a manner that will not endanger the vessel or associated equipment\*\*





72°20'0"W 72°10'0"W 72°0'0"W 71°50'0"W 71°40'0"W 71°30'0"W 71°20'0"W 71°10'0"W 71°0'0"W 70°50'0"W 70°40'0"W 70°30'0"W 70°20'0"W  
 40°40'0"N 40°50'0"N 41°00'0"N 41°10'0"N 41°20'0"N 41°30'0"N 41°40'0"N

**Block Island**  
 21 in reflect  
 21 in reflect  
 this chart

ship strikes  
 gull whale,  
 21 in reflect  
 this chart

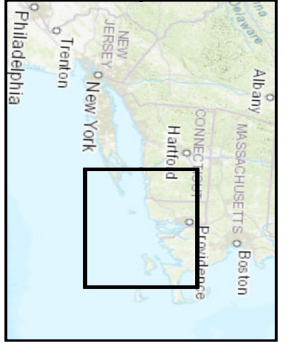
**PROVIDENCE**  
 current survey (MARS) require user  
 activation. See USCG Light List

**NOTES**  
 PRODUCE/NAVY HAS  
 Reported at spots of and indicates the  
 presence of a vessel or other object  
 (e.g., mine, buoy, etc.) in the  
 area. The vessel or object may be  
 a hazard to navigation. The  
 chart is not intended to be used  
 for navigation. The chart is  
 a reproduction of the original  
 chart. The original chart is  
 available for purchase from the  
 National Oceanic and Atmospheric  
 Administration.

**NOTES**  
 TRAFFIC SEPARATION SCHEME  
 Recommended traffic lines have been  
 established in the area. The lines  
 are shown in red. The lines  
 are not intended to be used  
 for navigation. The chart is  
 a reproduction of the original  
 chart. The original chart is  
 available for purchase from the  
 National Oceanic and Atmospheric  
 Administration.

**NOTES**  
 DUNE AND TIDE MEAS  
 The mean of low tide is the  
 reference level for the chart.  
 The mean of low tide is the  
 reference level for the chart.

**NOTES**  
 POLLUTION REPORTS  
 Reported at spots of and indicates the  
 presence of a vessel or other object  
 (e.g., mine, buoy, etc.) in the  
 area. The vessel or object may be  
 a hazard to navigation. The  
 chart is not intended to be used  
 for navigation. The chart is  
 a reproduction of the original  
 chart. The original chart is  
 available for purchase from the  
 National Oceanic and Atmospheric  
 Administration.



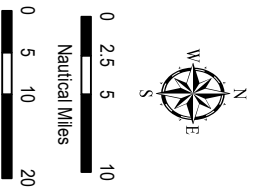
- Block Island Wind Farm
- ★ Potential Interconnection Location
- - - 3 Nautical Mile State Waters Boundary
- Revolution Wind Farm Survey Area
- South Fork Wind Farm Survey Area
- Deepwater Wind Lease Area

Note: Survey to occur along possible  
 cable routes to Quonset and Brayton Point  
 Mariners Briefings will be updated as needed

**Potential Cable Survey Corridors**

- Option 1
- Option 2

Data Sources:  
 BOEM, NOAA Chart #12300 (2008)  
 Projection:  
 NAD 83 UTM Zone 19N



**2018 Survey Areas**