

NEW ENGLAND SURVEY ACTIVITY

MARINERS BRIEFING

DATE OF NOTICE: 06 JANUARY 2018

NOTICE NO. 023

OVERVIEW

These briefings are intended to update mariners on marine operations for the Revolution Wind and South Fork Wind Farm surveys. Survey operations are planned to support both lease areas (see chart). These operations involve only the survey phase of the projects.

Mariners Briefings are submitted as needed to the U.S. Coast Guard and distributed to the fishing community and interested mariners on our website at: dwwind.com/information-for-mariners or via email upon request through Rodney Avila (contact info below)

VESSELS WILL DESIGNATE A WORKING CHANNEL ON VHF 16 DAILY AT 0600 AND 1800

CONTACT

JOHN O'KEEFFE
MANAGER, O&M AND MARINE AFFAIRS
Phone: 401.868.4228
Email: jokeeffe@dwwind.com

ABOUT THE WIND FARMS

The South Fork Wind Farm (SFWF) is a planned offshore wind farm located 30 miles east of Montauk that will consist of approximately 15 wind turbines. Revolution Wind is a 600 MW offshore wind farm serving Rhode Island and Connecticut. Both wind farms will contain an offshore substation, and a subsea transmission system able to deliver clean energy to their respective states.

- ONGOING SURVEY ACTIVITIES
- Projected End: December 2018
- For general information on the wind farms, please visit: dwwind.com

FOR FISHERIES RELATED INQUIRIES:
RODNEY AVILA
FISHERIES LIAISON
Phone: 508.889.0401
Email: ravila@dwwind.com

*Briefings will be updated as needed at dwwind.com/information-for-mariners



The Orsted logo consists of a white circle with a stylized 'O' inside, followed by the word "Orsted" in a bold, sans-serif font.



CONTI

The Conti is a shallow water vessel used for geotechnical surveying. Length is 210', with a 54' breadth. Registered gross tonnage of the vessel is 1708 t.

Call Sign
IMO

WDD3645
9285299

*Expected survey vessels / subject to change

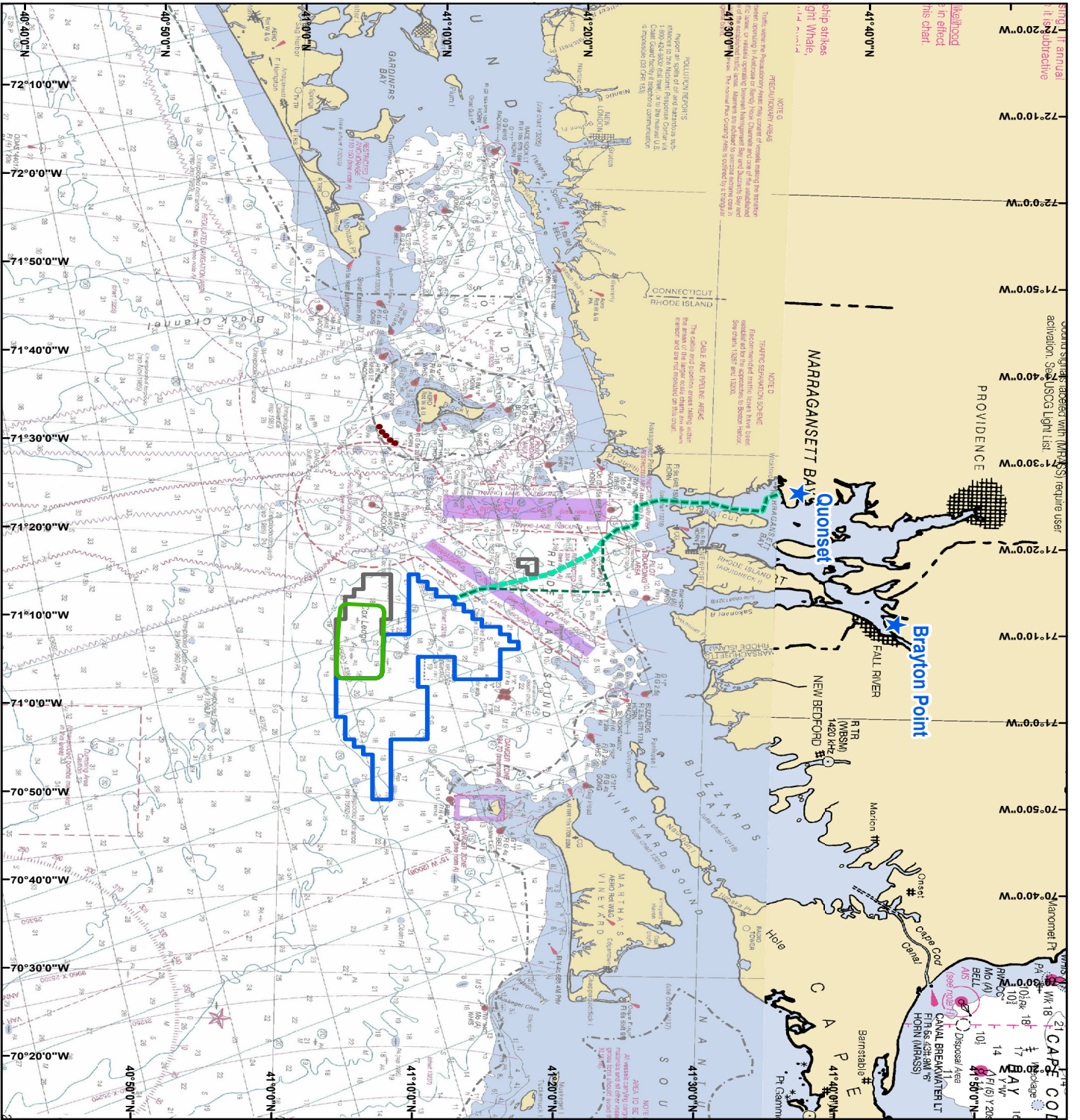


VESSEL NAME	SITE FUNCTION	PROJECT	DATE/ACTIVITY	PROJECTED OUTLOOK
Conti	Geotechnical Survey Vessel	South Fork	January 06 / Vessel will depart Quonset, RI and transit to lease area	WX dependent / Vessel will continue shallow geotechnical survey operations

**All Mariners transiting or fishing in the survey area are requested to give a wide berth to survey vessels as they may be limited in their ability to maneuver (VRAM) and towing gear out to 300 meters behind

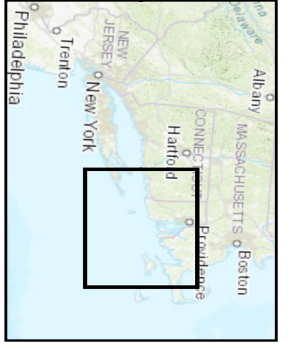
the vessel. Vessels in the vicinity of the survey vessels should operate in a manner that will not endanger the vessel or associated equipment**





72°20'0"W 72°10'0"W 72°0'0"W 71°50'0"W 71°40'0"W 71°30'0"W 71°20'0"W 71°10'0"W 71°0'0"W 70°50'0"W 70°40'0"W 70°30'0"W 70°20'0"W
 41°20'0"N 41°10'0"N 41°0'0"N 40°50'0"N 40°40'0"N

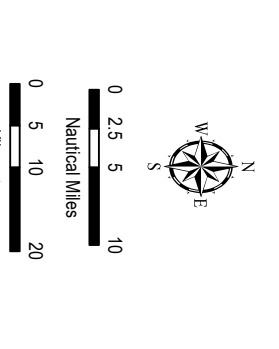
NOTES
 1. The chart is a reproduction of the original chart and is not a substitute for the original chart.
 2. The chart is a reproduction of the original chart and is not a substitute for the original chart.
 3. The chart is a reproduction of the original chart and is not a substitute for the original chart.



- Block Island Wind Farm
- ★ Potential Interconnection Location
- - - 3 Nautical Mile State Waters Boundary
- Revolution Wind Farm Survey Area
- South Fork Wind Farm Survey Area
- Deepwater Wind Lease Area

Potential Cable Survey Corridors
 --- Option 1
 --- Option 2

Note: Survey to occur along possible cable routes to Quonset and Brayton Point. Mariners Briefings will be updated as needed.



Data Sources:
 BOEM, NOAA Chart #12300 (2008)
 Projection:
 NAD 83 UTM Zone 19N

REVOLUTION WIND
SOUTH FORK WINDFARM
2018 Survey Areas