

NOTICE TO MARINERS



2021 Geophysical & Sediment Sampling survey for planned Offshore Windfarm Beacon Wind. Rev 04 - Issued: 2021-01-15

Mariners are advised that a survey vessel and equipment will be used in the offshore areas and coastal sea areas south of Martha's Vineyard.

The ROV and towed Seismic geophysical survey has been ongoing by MMTRSS on behalf of Equinor US using survey vessel Stril Explorer since 9th August 2020.

Vessel: STRIL EXPLORER
Call sign: LAZT7
IMO: 9484845
Owner: Mokster
GSM: +47 51 83 09 87
Email: bridge@explorer.mokster.no



During this survey the vessel has been and will continue to be deploying ROV subsea survey equipment along with towed Seismic equipment and will be restricted in their ability to manoeuvre. Approaching vessels are requested to pass at a safe speed and distance.

NOTICE TO MARINERS



Project Description

The Geophysical and Sediment Sampling survey will be conducted by MMTRSS on behalf of Equinor US. The survey covers the planned Beacon Wind lease area and Export Transmission Route.

Mariners are advised to keep a safety clearance to the vessel of no less than 350m.

Port of Operation

Stril Explorer will continue to operate from the Provport, RI until April 2021.

Poor weather may extend these dates.

Key Contact Details:

Further enquiries should be addressed to the following people in the following order:

1. Martin Godfrey (MMT Project Manager), T: +44 (0) 1295 817 748, martin.godfrey@mmt.se
2. Kalle Flink (MMT Operations), T: +46 708 11 28 43, kalle.flink@mmt.se

NOTICE TO MARINERS

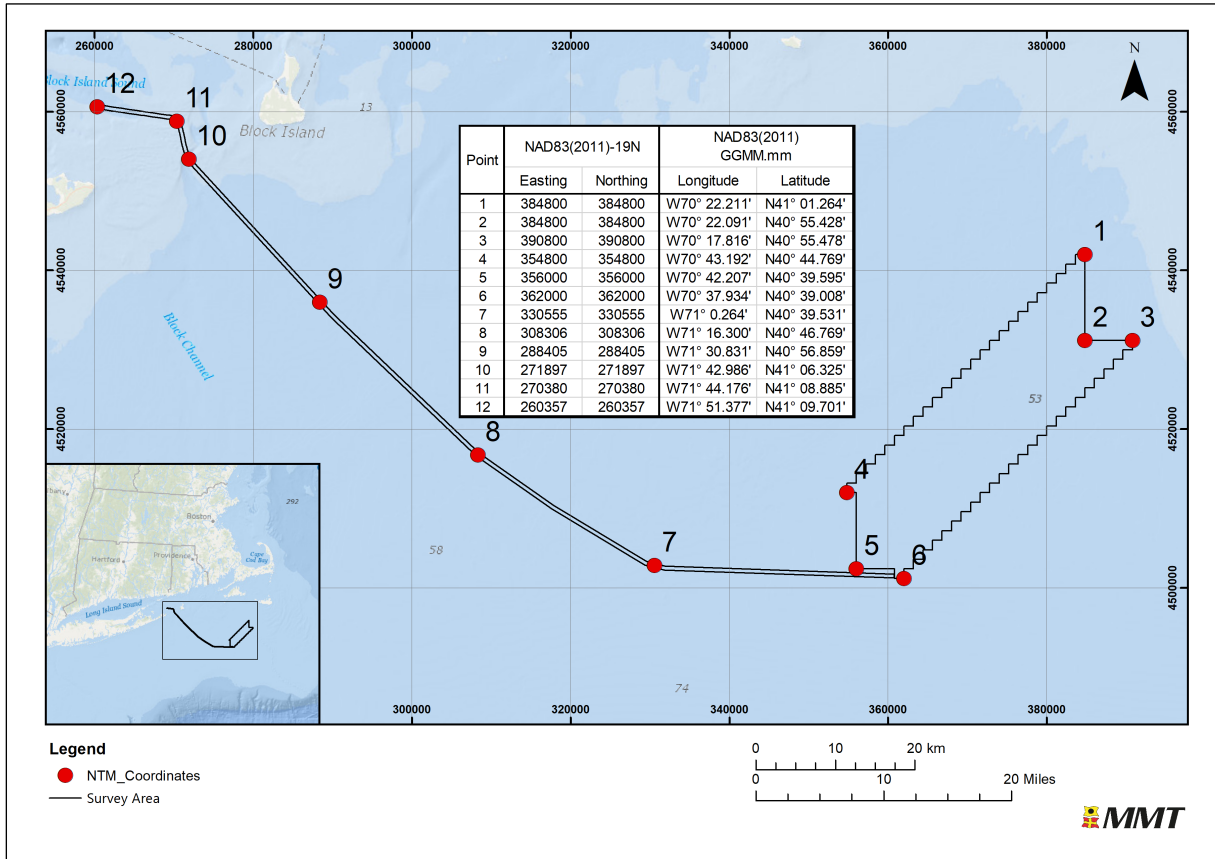


Figure 1 – General Survey Area

NOTICE TO MARINERS



Distribution List:

USCG New Bedford

D01-SMB-SecSENE-Arrivals@uscg.mil

D1LNM@USCG.mil

Jordan.A.Ortiz@uscg.mil

Scott.J.Scarpinato@uscg.mil

Jack.J.McLaughlin@uscg.mil

USCG New York

sectornewyorkvdo@uscg.mil

seclis-psc@uscg.mil

FISHERIES

EMARC@equinor.com

NMFS

nmfs.gar.garfo@noaa.gov

BOEM

Stephen.boutwell@boem.gov