

New England Survey Activity

Mariners Briefing

DATE OF NOTICE: 24 APRIL 2019

NOTICE NO. 003

Overview

These briefings are intended to update mariners on marine operations for the Bay State Wind survey activities. Survey operations are planned for locations throughout the lease area (see chart) and are expected to last several months. These operations involve only the survey phase of the projects.

Mariners briefings are submitted as needed to the U.S. Coast Guard and distributed to the fishing community and interested mariners on our website at: dwwind.com/information-for-mariners or via email upon request through Rodney Avila (RODAV@orsted.com).

Vessels will designate a working channel on VHF 16 daily at 0600 and 1800

About the Wind Farm

Bay State Wind (BSW), a 50-50 joint venture between Ørsted and Eversource, is a planned offshore wind farm located 14 miles south of Martha's Vineyard. BSW will contain an offshore substation, and a subsea transmission system able to deliver clean energy to the New England electrical grid.

Ongoing Survey Activities

- Projected Beginning: April 2019
- Projected End: July 2019

Contact

For fisheries related inquiries:

Rodney Avila

Corporate Fisheries Liaison

Phone: 857.332.4479

Email: RODAV@orsted.com

John O'Keefe

Director Marine Affairs

Phone: 857.332.4485

Email: JOHNO@orsted.com

John Williamson

RI/MA Fisheries Liaison

Phone: 207.939.7055

Email: john@seakeeper.net

Julia Prince

CT/NY Fisheries Liaison

Phone: 857.348.3263

Email: JULPR@orsted.com





Conti

MV Conti is used for geotechnical surveying. It employs a dynamic positioning system to maintain position when on site.

Flag: USA
LOA: 210 ft
Beam: 54 ft
DWT: 2346 mt

Call Sign: WDD3645
IMO: 9285299



Regulus

MV Regulus is used for geotechnical surveying. It employs a dynamic positioning system to maintain position when on site.

Flag: USA
LOA: 272 ft
Beam: 58 ft
DWT: 3580 mt

Call Sign: WGD2987
IMO: 9582324



Gargano

MV Gargano is used for geotechnical surveying. It employs a dynamic positioning system to maintain position when on site.

Flag: British
LOA: 236 ft
Beam: 52 ft
DWT: 2244 mt

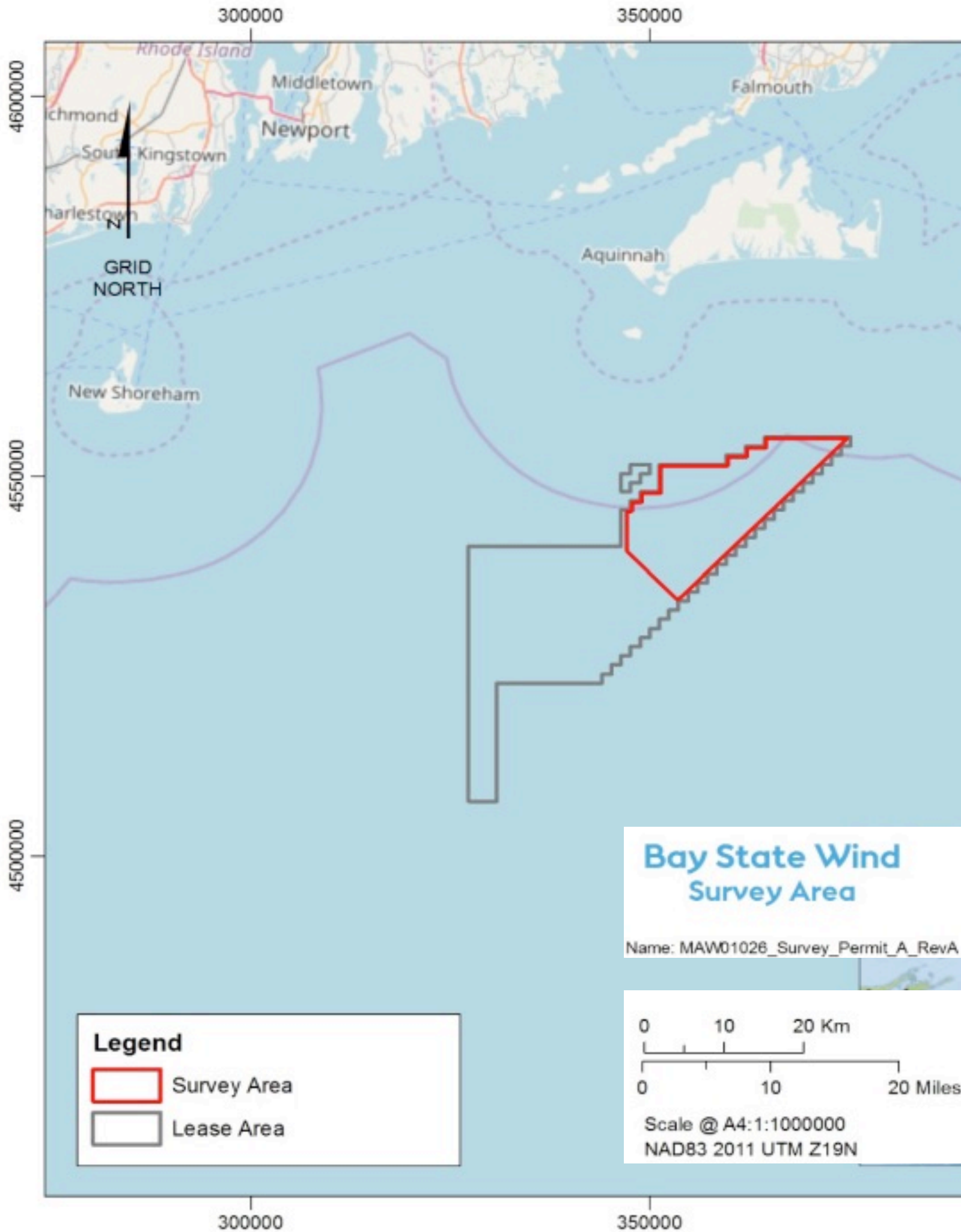
Call Sign: VSMW5
IMO: 9249403

VESSEL NAME	SITE FUNCTION	PROJECT	DATE/ACTIVITY	PROJECTED OUTLOOK
Conti	Geotechnical Survey Vessel	Bay State Wind	April 23 / Vessel is continuing geotechnical sampling in the lease area	Wx dependent / Vessel will conduct survey activities in lease area
Regulus	Geotechnical Survey Vessel	Bay State Wind	Continued mobilization in Quonset RI	Continued mobilization in Quonset RI
Gargano	Geotechnical Survey Vessel	Bay State Wind	Vessel not yet mobilized	Vessel not yet mobilized

**All Mariners transiting or fishing in the survey area are requested to give a wide berth to survey vessels as they may be limited in their ability to maneuver (VRAM) and towing gear out to 300 meters behind

the vessel. Vessels in the vicinity of the survey vessels should operate in a manner that will not endanger the vessel or associated equipment**

*Expected survey vessels / subject to change

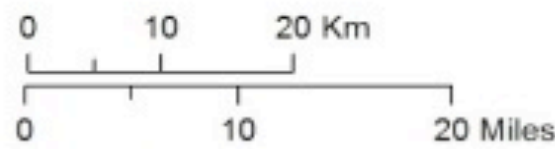


Legend

-  Survey Area
-  Lease Area

**Bay State Wind
Survey Area**

Name: MAW01026_Survey_Permit_A_RevA



Scale @ A4:1:1000000
NAD83 2011 UTM Z19N