

# New England Survey Activity

## Mariners Briefing

Date of Notice: May 6, 2019

Notice No. 006

### Overview

These briefings are intended to update mariners on marine operations for the Bay State Wind survey activities. Survey operations are planned for locations throughout the lease area (see chart) and are expected to last several months. These operations involve only the survey phase of the projects.

Mariners briefings are submitted as needed to the U.S. Coast Guard and distributed to the fishing community and interested mariners on our website at: [us.orsted.com/mariners](http://us.orsted.com/mariners) or via email upon request through Rodney Avila (RODAV@orsted.com).

**Vessels will designate a working channel on VHF 16 daily at 0600 and 1800**

### About the Wind Farm

Bay State Wind (BSW), a 50-50 joint venture between Ørsted and Eversource, is a planned offshore wind farm located 14 miles south of Martha's Vineyard. BSW will contain an offshore substation, and a subsea transmission system able to deliver clean energy to the New England electrical grid.

#### Ongoing Survey Activities

- Projected Beginning: April 2019
- Projected End: July 2019

### Contact

#### For fisheries related inquiries:

**Rodney Avila**  
Corporate Fisheries Liaison  
Phone: 857.332.4479  
Email: RODAV@orsted.com

**John O'Keefe**  
Director Marine Affairs  
Phone: 857.332.4485  
Email: JOHNO@orsted.com

**Julia Prince**  
CT/NY Fisheries Liaison  
Phone: 857.348.3263  
Email: JULPR@orsted.com



## Conti

MV Conti is used for geotechnical surveying. It employs a dynamic positioning system to maintain position when on site.

Flag: USA  
 LOA: 210 ft  
 Beam: 54 ft  
 DWT: 2346 mt

Call Sign: WDD3645  
 IMO: 9285299



## Regulus

MV Regulus is used for geotechnical surveying. It employs a dynamic positioning system to maintain position when on site.

Flag: USA  
 LOA: 272 ft  
 Beam: 58 ft  
 DWT: 3580 mt

Call Sign: WGD2987  
 IMO: 9582324



## Gargano

MV Gargano is used for geotechnical surveying. It employs a dynamic positioning system to maintain position when on site.

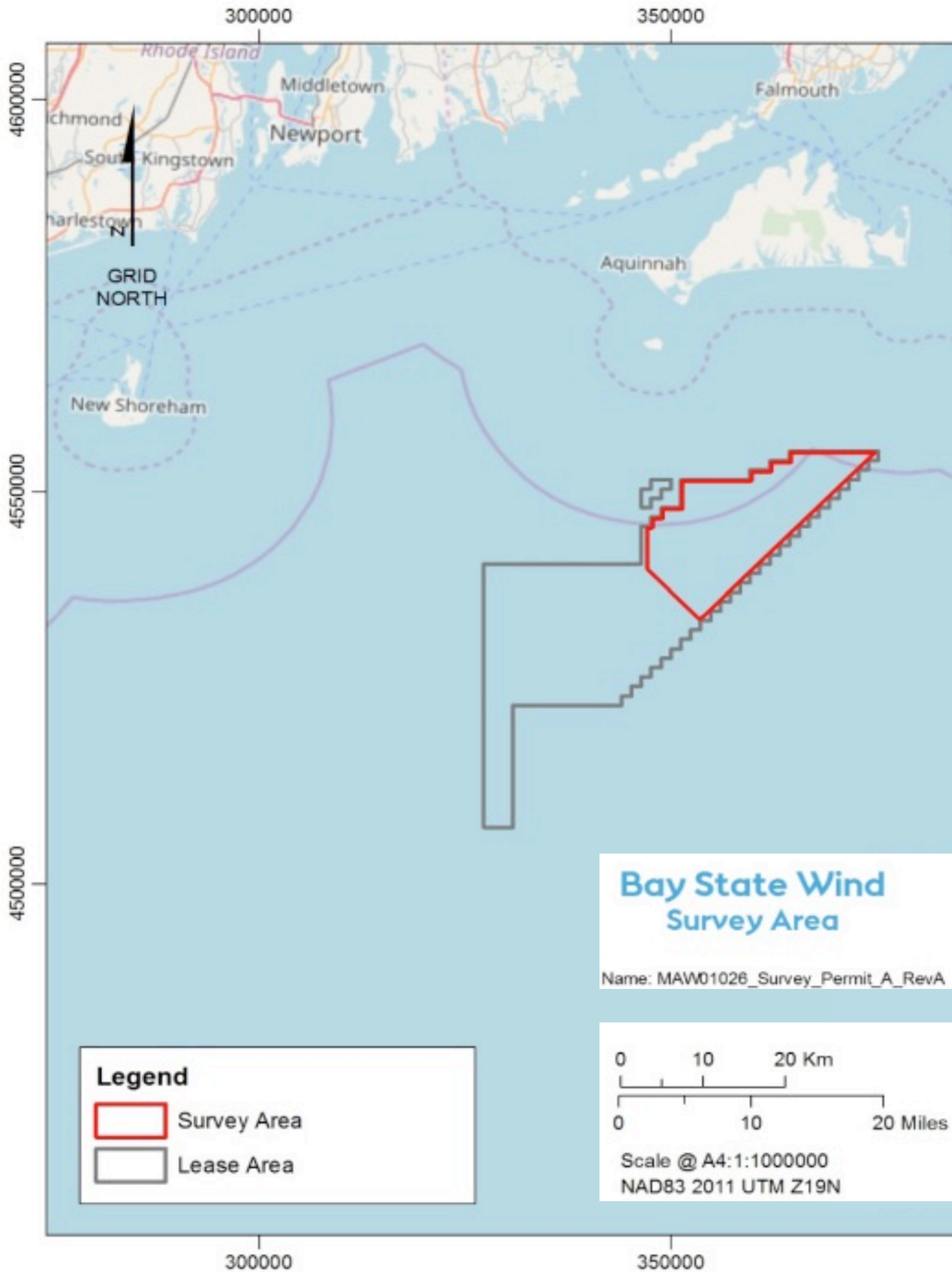
Flag: British  
 LOA: 236 ft  
 Beam: 52 ft  
 DWT: 2244 mt

Call Sign: VSMW5  
 IMO: 9249403

Vessel Name	Site Function	Project	Date/Activity	Projected Outlook
Conti	Geotechnical Survey Vessel	Bay State Wind	May 6 / Vessel is anchored in Quonset RI	Wx dependent / Vessel will return to site and continue survey activities in lease
Regulus	Geotechnical Survey Vessel	Bay State Wind	May 6 / Vessel is docked in Quonset RI for crew change	Wx dependent / Vessel will return to site and continue survey activities in lease
Gargano	Geotechnical Survey Vessel	Bay State Wind	Vessel not yet mobilized	Vessel not yet mobilized

\*\*All Mariners transiting or fishing in the survey area are requested to give a wide berth to survey vessels as they may be limited in their ability to maneuver (VRAM) and towing gear out to 300 meters behind the vessel. Vessels in the vicinity of the survey vessels should operate in a manner that will not endanger the vessel or associated equipment\*\*

\*Expected survey vessels / subject to change

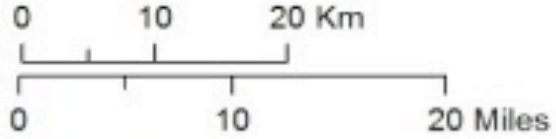


**Legend**

-  Survey Area
-  Lease Area

**Bay State Wind  
Survey Area**

Name: MAW01026\_Survey\_Permit\_A\_RevA



Scale @ A4:1:1000000  
NAD83 2011 UTM Z19N