

# Northeast Survey Activity

## Mariners Briefing

Date of Notice: March 2, 2020

Notice No. 079

### Overview

These briefings are intended to update mariners on marine operations for Ørsted survey activities. Survey operations are planned for locations throughout the lease areas (see chart) and are expected to last several months. These operations involve only the survey phase of the projects.

Mariners briefings are submitted on Mondays and Thursdays to the U.S. Coast Guard and distributed to the fishing community and interested mariners on our website at: [us.orssted.com/mariners](https://us.orssted.com/mariners) or via email upon request through Rodney Avila (RODAV@orssted.com).

**Vessels will designate a working channel on VHF 16 daily at 0600 and 1800 to communicate work plan for the next 12 hours**

### About the Wind Farms

**Sunrise Wind** is a planned offshore wind farm located 30 miles east of Montauk Point.

#### Ongoing SRW Survey Activities

- Projected Beginning: August 2019
- Projected End: March 2020

\*At any time, vessels may seek shelter in a different zone due to weather



## Highland Eagle

MV Highland Eagle is used for geotechnical surveying.

Flag: UK

LOA: 236 ft

Beam: 52 ft

Call Sign: VQIE5

IMO: 9249465

**Project:** Sunrise Wind

© Ashley Hunn  
MarineTraffic.com



**1-16** Orsted Survey Zones

3 Nautical Mile State Waters  
Boundary

**Revolution and South Fork Wind**  
Lease OCS-A 0486

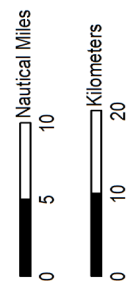
Proposed South Fork Wind  
Export Cable

Potential Revolution Wind  
Export Cable Route  
Alternatives

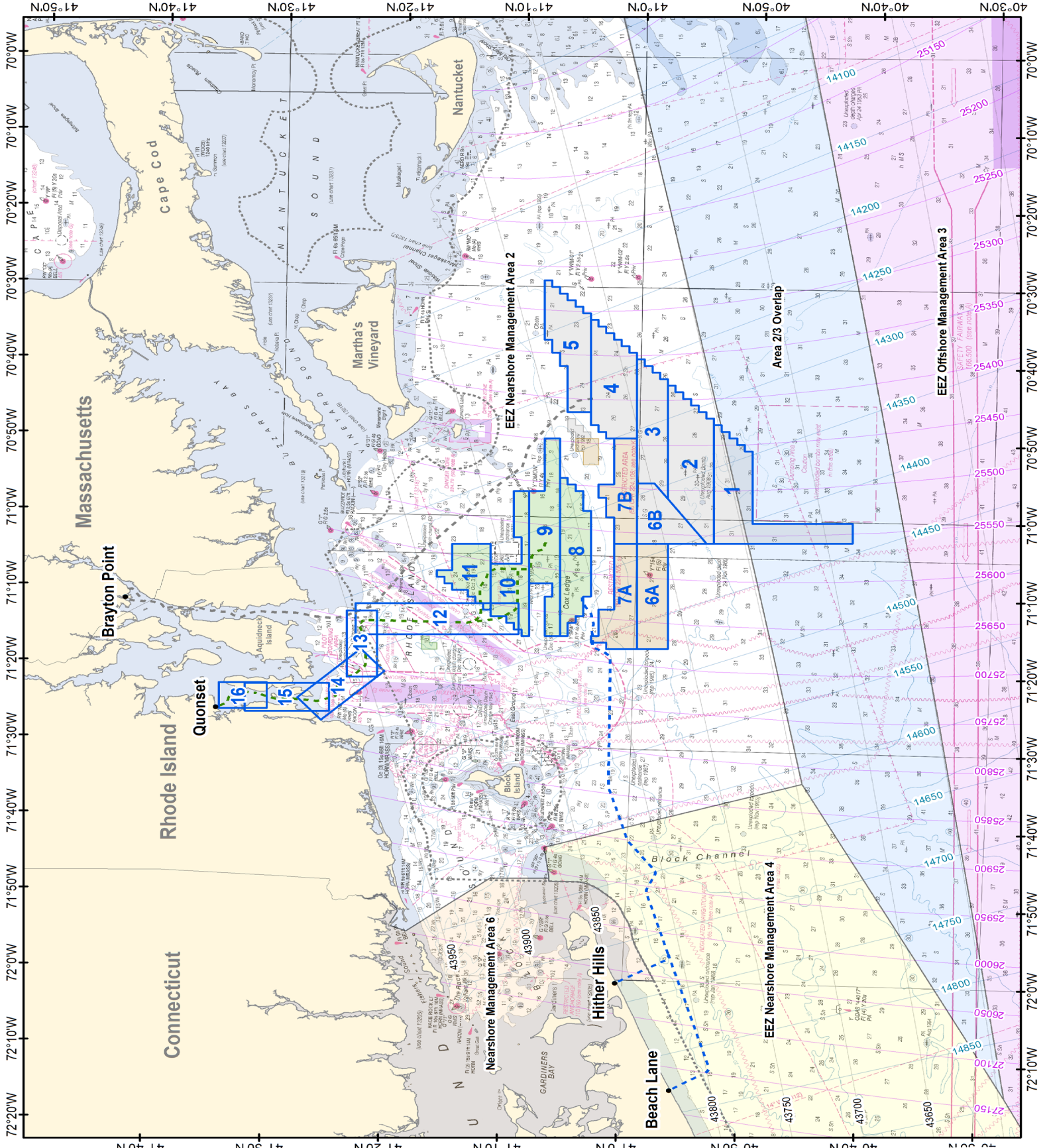
**Bay State Wind**  
Lease OCS-A 0500

Proposed Bay State Wind  
Export Cable Route

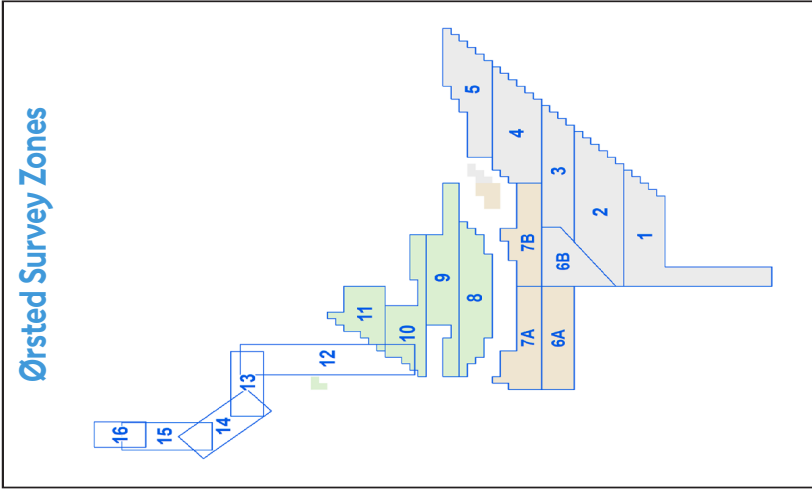
**Sunrise Wind**  
Lease OCS-A 0487



Depth Soundings in Fathoms  
Source: BOEM, NOAA Chart 12300 (2012)  
Projection: NAD 1983 UTM Zone 19N (meters)  
Date: 9/26/2019



# New England Survey Activity



Survey briefings are distributed to the fishing community and interested mariners on our website at: [us.ørsted.com/mariners](http://us.ørsted.com/mariners) or via email upon request through Rodney Avila (RODAV@ørsted.com).

## Ørsted Fisheries Outreach Team

**John O'Keefe**  
Director, Marine Affairs  
Email: JOHNO@ørsted.com

**Rodney Avila**  
Corporate Fisheries Liaison  
Phone: 857.332.4479  
Email: RODAV@ørsted.com

**Ed LeBlanc**  
Manager, Marine Affairs  
Email: EDWLE@ørsted.com

**Julia Prince**  
CT/NY Fisheries Liaison  
Phone: 857.348.3263  
Email: JULPR@ørsted.com

**Caitlin O'Mara**  
Marine Affairs Coordinator  
Email: CAIMA@ørsted.com

## Fisheries Representatives

- Mass Lobstermen's Association - Massachusetts
- Martha's Vineyard Fishermen Preservation Trust - Massachusetts
- New Bedford Port Authority - Massachusetts
- Rodman Sykes - Rhode Island
- Sid Holbrook - Connecticut
- Erling Berg - New Jersey
- Julie Evans - New York

Contact Rodney Avila for local fisheries representatives' contact information.

Survey Zone ID	Latitude	Longitude
8	41° 06.262' N	71° 15.474' W
	41° 06.635' N	70° 54.908' W
	41° 03.969' N	70° 59.115' W
	41° 03.769' N	71° 10.248' W
9	41° 06.262' N	71° 15.474' W
	41° 06.718' N	70° 49.765' W
	41° 08.015' N	70° 49.801' W
	41° 09.199' N	70° 56.698' W
10	41° 08.986' N	71° 08.704' W
	41° 07.558' N	71° 15.519' W
	41° 09.199' N	70° 56.698' W
	41° 10.495' N	70° 56.737' W
11	41° 12.274' N	71° 06.235' W
	41° 09.681' N	71° 06.152' W
	41° 12.145' N	71° 13.100' W
	41° 08.855' N	71° 15.563' W
12	41° 12.161' N	71° 12.242' W
	41° 12.320' N	71° 03.661' W
	41° 15.561' N	71° 03.762' W
	41° 16.779' N	71° 08.099' W
13	41° 09.780' N	71° 15.359' W
	41° 23.489' N	71° 15.832' W
	41° 23.568' N	71° 11.762' W
	41° 09.858' N	71° 11.303' W
14	41° 21.743' N	71° 12.654' W
	41° 24.298' N	71° 12.740' W
	41° 24.126' N	71° 21.382' W
	41° 21.572' N	71° 21.290' W
15	41° 20.959' N	71° 20.567' W
	41° 26.185' N	71° 27.115' W
	41° 28.225' N	71° 24.243' W
	41° 22.997' N	71° 17.696' W
16	41° 25.500' N	71° 25.941' W
	41° 25.577' N	71° 22.259' W
	41° 32.692' N	71° 22.518' W
	41° 32.615' N	71° 26.208' W

Survey Zone ID	Latitude	Longitude
1	40° 53.523' N	71° 03.075' W
	40° 53.780' N	70° 47.698' W
	40° 50.485' N	70° 51.026' W
	40° 50.328' N	71° 00.415' W
2	40° 41.901' N	71° 00.161' W
	40° 41.856' N	71° 02.716' W
	40° 53.523' N	71° 03.075' W
	40° 53.780' N	70° 47.698' W
3	40° 57.748' N	70° 42.673' W
	40° 57.514' N	70° 57.355' W
	40° 57.514' N	70° 57.355' W
	40° 57.748' N	70° 42.673' W
4	41° 00.391' N	70° 39.316' W
	41° 00.141' N	70° 55.433' W
	41° 00.236' N	70° 49.586' W
	41° 00.391' N	70° 39.316' W
5	41° 04.353' N	70° 34.274' W
	41° 04.152' N	70° 47.980' W
	41° 04.179' N	70° 46.267' W
	41° 04.353' N	70° 34.274' W
6A	41° 08.311' N	70° 29.221' W
	41° 08.207' N	70° 36.939' W
	41° 06.213' N	70° 40.320' W
	41° 06.124' N	70° 46.319' W
6B	40° 57.155' N	71° 16.874' W
	40° 59.748' N	71° 16.963' W
	40° 57.413' N	71° 03.196' W
	41° 00.005' N	71° 03.276' W
7A	41° 00.141' N	70° 55.433' W
	40° 54.137' N	71° 03.094' W
	41° 00.005' N	71° 03.276' W
	40° 58.668' N	70° 55.390' W
7B	40° 59.748' N	71° 16.963' W
	41° 03.653' N	71° 16.242' W
	41° 01.950' N	71° 03.336' W
	41° 00.005' N	71° 03.276' W

Vessel Name	Site Function	Project	Outlook 03/02-03/04	Projected Outlook 03/05-03/08
Highland Eagle	Geotechnical survey vessel	Sunrise Wind	Conducting survey activities in Survey Zone 7A	Conducting survey activities in Survey Zone 6B

\*All Mariners transiting or fishing in the survey area are requested to give a wide berth to survey vessels as they may be limited in their ability to maneuver (VRAM) and towing gear out to 300 meters behind the vessel. Vessels in the vicinity of the survey vessels should operate in a manner that will not endanger the vessel or associated equipment

\*\*Wx permitting / Survey operations will be conducted 24/7\*\*

## Contact

For fisheries related inquiries:

**Rodney Avila**  
**Corporate Fisheries Liaison**  
 Phone: 857.332.4479  
 Email: RODAV@orsted.com

**Julia Prince**  
**CT/NY Fisheries Liaison**  
 Phone: 857.348.3263  
 Email: JULPR@orsted.com

**Ross Pearsall**  
**Fisheries Stakeholders Relations Manager**  
 Phone: 857.278.2442  
 Email: ROSPE@orsted.com

**Chris Sarro**  
**RI/MA Fisheries Liaison**  
 Email: XCSAR@orsted.com