

# NEW ENGLAND SURVEY ACTIVITY

# MARINERS BRIEFING

DATE OF NOTICE: 04 DECEMBER 2018

NOTICE NO. 015

## OVERVIEW

These briefings are intended to update mariners on marine operations for the Revolution Wind and South Fork Wind Farm surveys. Survey operations are planned to support both lease areas (see chart). These operations involve only the survey phase of the projects.

Mariners Briefings are submitted as needed to the U.S. Coast Guard and distributed to the fishing community and interested mariners on our website at: [dwwind.com/information-for-mariners](http://dwwind.com/information-for-mariners) or via email upon request through Rodney Avila (contact info below)

**VESSELS WILL DESIGNATE A WORKING CHANNEL ON VHF 16 DAILY AT 0600 AND 1800**

## CONTACT

**JOHN O'KEEFFE**  
MANAGER, O&M AND MARINE AFFAIRS  
Phone: 401.868.4228  
Email: [jokeeffe@dwwind.com](mailto:jokeeffe@dwwind.com)

## ABOUT THE WIND FARMS

The South Fork Wind Farm (SFWF) is a planned offshore wind farm located 30 miles east of Montauk that will consist of approximately 15 wind turbines. Revolution Wind is a 600 MW offshore wind farm serving Rhode Island and Connecticut. Both wind farms will contain an offshore substation, and a subsea transmission system able to deliver clean energy to their respective states.

- ONGOING SURVEY ACTIVITIES
- Projected End: December 2018
- For general information on the wind farms, please visit: [dwwind.com](http://dwwind.com)

**FOR FISHERIES RELATED INQUIRIES:**

**RODNEY AVILA**  
FISHERIES LIAISON  
Phone: 508.889.0401  
Email: [ravila@dwwind.com](mailto:ravila@dwwind.com)

\*Briefings will be updated as needed at [dwwind.com/information-for-mariners](http://dwwind.com/information-for-mariners)



The Orsted logo consists of a white circle containing a stylized 'O' symbol, followed by the word "Orsted" in a bold, white, sans-serif font, all set against a blue rectangular background.

# DISCOVERY

The Discovery is used for geophysical and geotechnical surveying. Length is 230', with a 41' breadth. Registered gross tonnage of the vessel is 1991 t.

Call Sign            3EKE6  
IMO                    9152882



© Paul Whitelaw  
MarineTraffic.com



© Gary L. Naifeh  
MarineTraffic.com

# MEGAN MILLER

The Megan Miller is a shallow and intermediate water vessel used for geophysical surveying. Length is 59', with a 23' breadth.

Call Sign            WCW9003

\*Expected survey vessels / subject to change

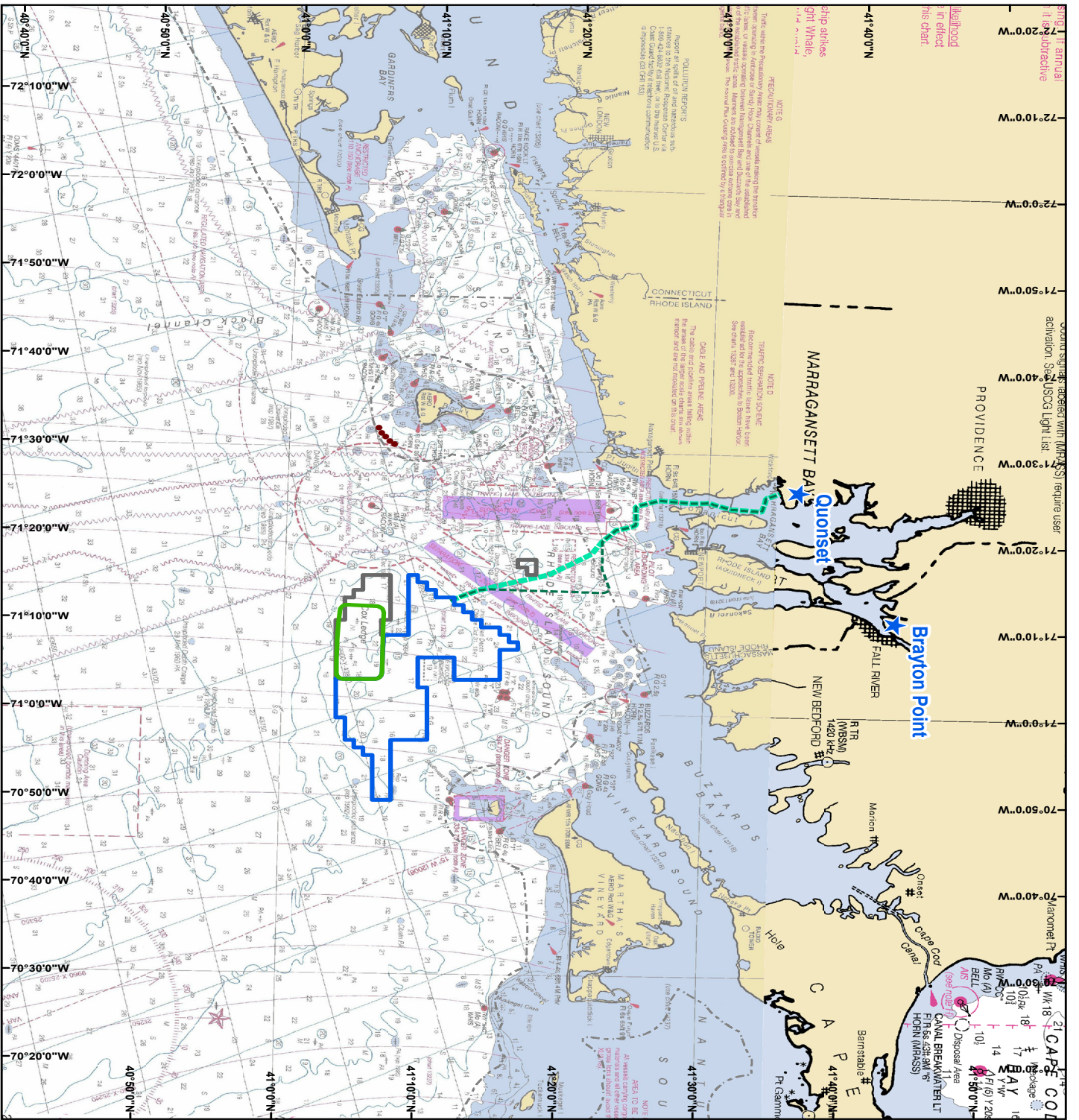


VESSEL NAME	SITE FUNCTION	DATE/ACTIVITY	PROJECTED OUTLOOK
Discovery	Geophysical & Geotechnical Survey Vessel	December 04 / Vessel will transit to lease area	WX dependent / Vessel will continue surveying
Megan Miller	Geophysical Survey Vessel	December 04 / Vessel will standby in North Kingstown, RI due to WX	December 05 WX dependent / Vessel will continue surveying lease area

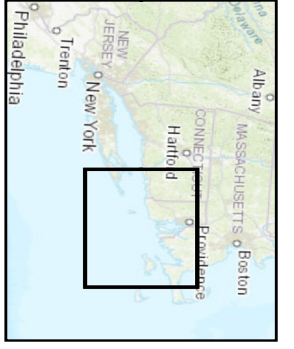
\*\*All Mariners transiting or fishing in the survey area are requested to give a wide berth to survey vessels as they may be limited in their ability to maneuver (VRAM) and towing gear out to 300 meters behind

the vessel. Vessels in the vicinity of the survey vessels should operate in a manner that will not endanger the vessel or associated equipment\*\*





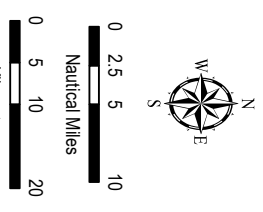
72°20'0"W 72°10'0"W 72°0'0"W 71°50'0"W 71°40'0"W 71°30'0"W 71°20'0"W 71°10'0"W 71°0'0"W 70°50'0"W 70°40'0"W 70°30'0"W 70°20'0"W  
 40°40'0"N 40°50'0"N 41°00'0"N 41°10'0"N 41°20'0"N 41°30'0"N 41°40'0"N



- Block Island Wind Farm
- ★ Potential Interconnection Location
- - - 3 Nautical Mile State Waters Boundary
- Revolution Wind Farm Survey Area
- South Fork Wind Farm Survey Area
- Deepwater Wind Lease Area

Note: Survey to occur along possible cable routes to Quonset and Brayton Point. Mariners Briefings will be updated as needed.  
**Potential Cable Survey Corridors**  
 --- Option 1  
 --- Option 2

Data Sources:  
 BOEM, NOAA Chart #12300 (2008)  
 Projection:  
 NAD 83 UTM Zone 19N



**REVOLUTION WIND**  
**SOUTH FORK WINDFARM**  
**2018 Survey Areas**